

Hytrans® HydroSub® 150



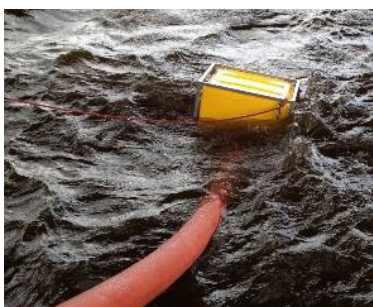
General description

The HydroSub® 150 mobile pump unit consists of a diesel-hydraulic power pack pump unit with a portable hydraulic driven submersible pump, complete with floating device.

No draft problem anymore. No suction draft losses, due to the application of a hydraulically driven submersed floating pump, powered through a hydraulic transmission by a powerful diesel engine. Compactly build into a base-skid-frame.

Featuring access to any open water at a horizontal and vertical combination distance of total 60 meters.

Output: 3.800 ltr/min @ 10 bar and/or 8.000 ltr/min @ 2,5 bar



Hytrans® HydroSub® 150

Main features

The HydroSub® 150 is a mobile pump unit driven by a powerful diesel engine with radiator cooling. The unit is built in a base-skid-frame with stainless steel panelling and anodized aluminium doors. Designed to last!

Submersible floating pump

The bronze pump housing with a bronze alloy impeller is built into a carrying frame with floater and wheels. The pump is connected to the diesel-hydraulic power pack by means of two hydraulic hoses installed on two reels. Dimensions: (submersible only) 580 x 710 X 935 mm. Weight only approx. 115 Kg. (250 lbs). The submergibility and floating features guarantees operation with cleanest possible water, not affected by the water level or by waves. Even in cases where water is being pumped from very shallow locations and consequently the risk of an airlock due to an air bubble exists, the pump will still maintain its operation. This in contradiction with a conventional suction pump. No suction loss possible and no priming needed!

Portability

The limited weight of submersible floating pump provides the ability for two persons to place (throw) the pump in the water. The pump frame is equipped with wheels, sliding plate and four handles to enable a four person lift.

Accessibility / Operational speed

The portability and the 60 meter hydraulic hose length guarantees access to almost all open waters, providing a very speedy water supply without any capacity loss or time loss due to draft problems, at a reach of up to 60 meter or with a vertical lift of up to 60 meter. The hydraulic hose is stored on two hydraulic driven hose reels. The unit has a hydraulic driven support winch to retrieve the submersible pump after deployment.

Hytrans® Control System.

The unit is equipped with an advanced Hytrans® CANbus control system. All vital parameters are measured and automatically maintained, such as oil pressure, oil temperature, fuel level, motor temperature, etc. The ergonomically designed control panel shows also the calculated water output. Audible and visible alarms are generated when a parameter falls outside its maximum or minimum settings. If alarms are ignored for a prolonged time, the unit will at your choice either automatically regulate itself to a safe level to prevent permanent damage OR it will, at your choice, "run-to-death". Faulty sensors can be overruled to prevent unwanted shutdown.

Emission and other options

The Hydrosu[®]150 is available according EU/USA NonRoad Mobile emission rules

(NRMM Stage 4 / Tier 4 final). A full list of options is available, including SuperHighflow pumps, floodpumps, remote controls, pressure controls, trailers etc, etc

Unmatched reliability

Close to a thousand HydroSub® 150 units are in daily service at fire brigades, nuclear installations and civil defences all over the world, fighting fires and floods providing water for numerous applications. Thousands of hours on the clock are no exception!

HFS® Mobile Water Supply

Besides the HydroSub® units, Hytrans® supplies all additional equipment to complement the Hytrans® Fire System.

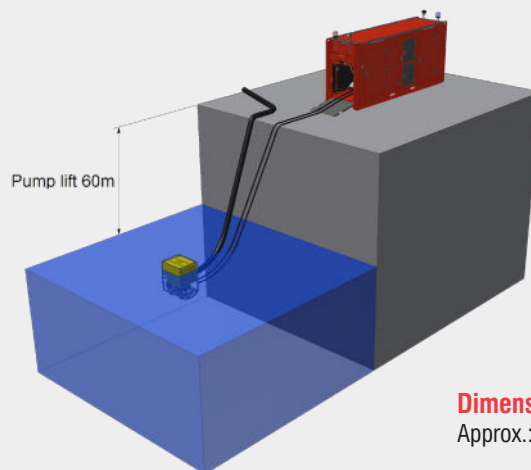
Hose Layer Containers for the use of thousands of meters SLD Super Large Diameter hoses up to 300 mm/12-inch, extreme fast hose lay-out and easy speedy automatic hose pick-up with little manpower, due to the deployment of a revolutionary automatic hose pick-up system, the Hytrans® Hose Recovery Unit (HRU).

Also large diameter hoses, Y-pieces, gate valves and all other equipment needed to make a complete mobile water supply in no time and with a minimum of manpower. (see separate brochures, available on request).

Contact us for more information.

Capacity

- Standard impeller
- 2500 lpm @ 14 bar
(660 GPM @ 200 psi)
 - 3800 lpm @ 10 bar
(1000 GPM @ 150 psi)
- With optional Hi-Flow impeller
- 8000 lpm @ 2,5 bar
(2100 GPM @ 36 psi)



Dimensions / weight

Approx.: 4200 / 1162 / 1840 mm / 3060-3110 kg

Hytrans Systems